

How a Tumor Protein Can Guide Cancer Care

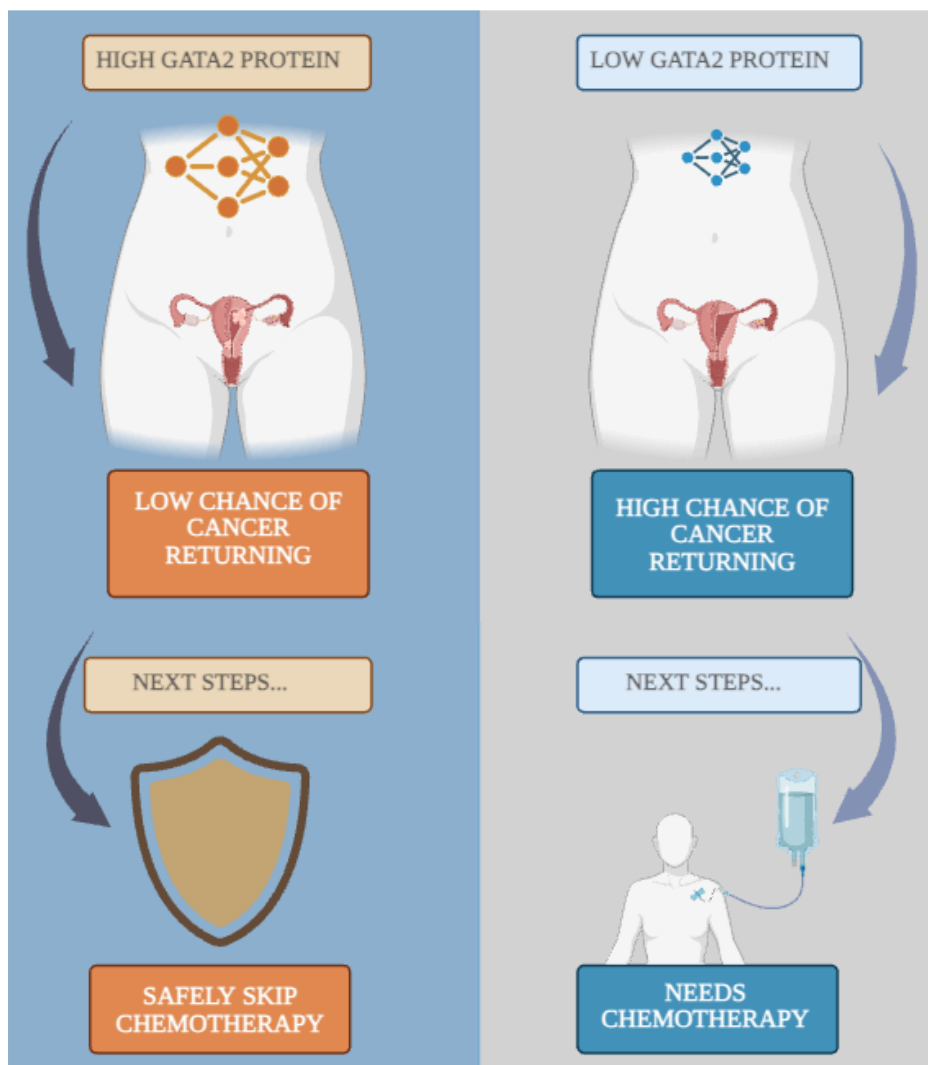
Protein GATA2

Some uterine cancers can come back after surgery. In this study, researchers looked at whether a protein called GATA2 could tell which cancers are likely to return.

Choosing Better Treatments

The researchers found that when there was less of this GATA2 protein in a tumor, the cancer was more likely to come back. This means patients with lower levels of GATA2 could benefit from chemotherapy after surgery.

GATA2 Protein and Uterine Cancer Returning



Carbone Cancer Center

UNIVERSITY OF WISCONSIN
SCHOOL OF MEDICINE AND PUBLIC HEALTH

Polaki et al. Loss of GATA2 promotes invasion and predicts cancer recurrence and survival in FIGO stage I uterine serous carcinoma. AACR 2025.

