

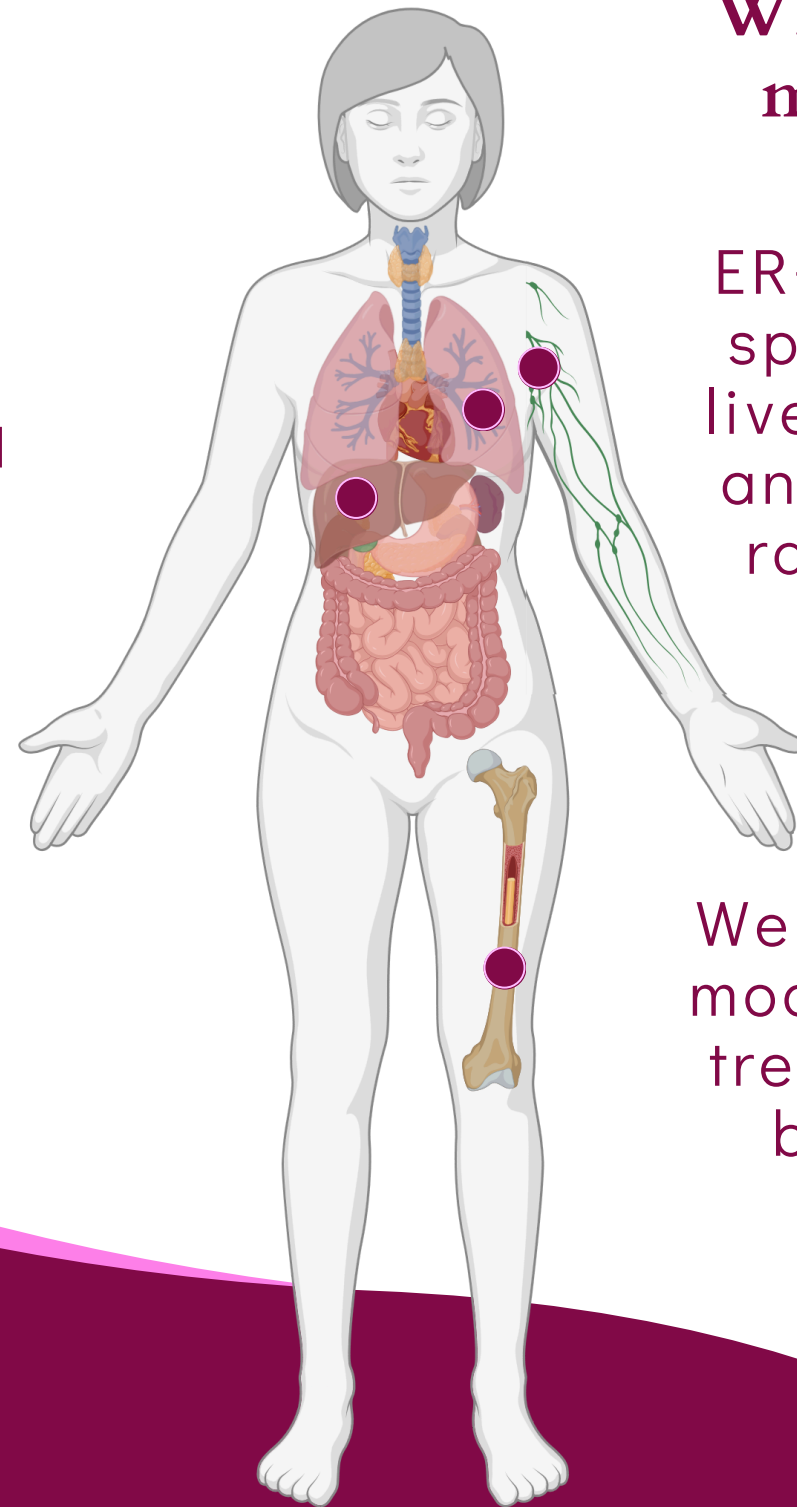
A New Rat Model to Study ER+ Breast Cancer

Why do we need a new animal model?

Most breast cancers are estrogen receptor-positive (ER+)

But, most animal models used to study breast cancer are ER-, not ER+

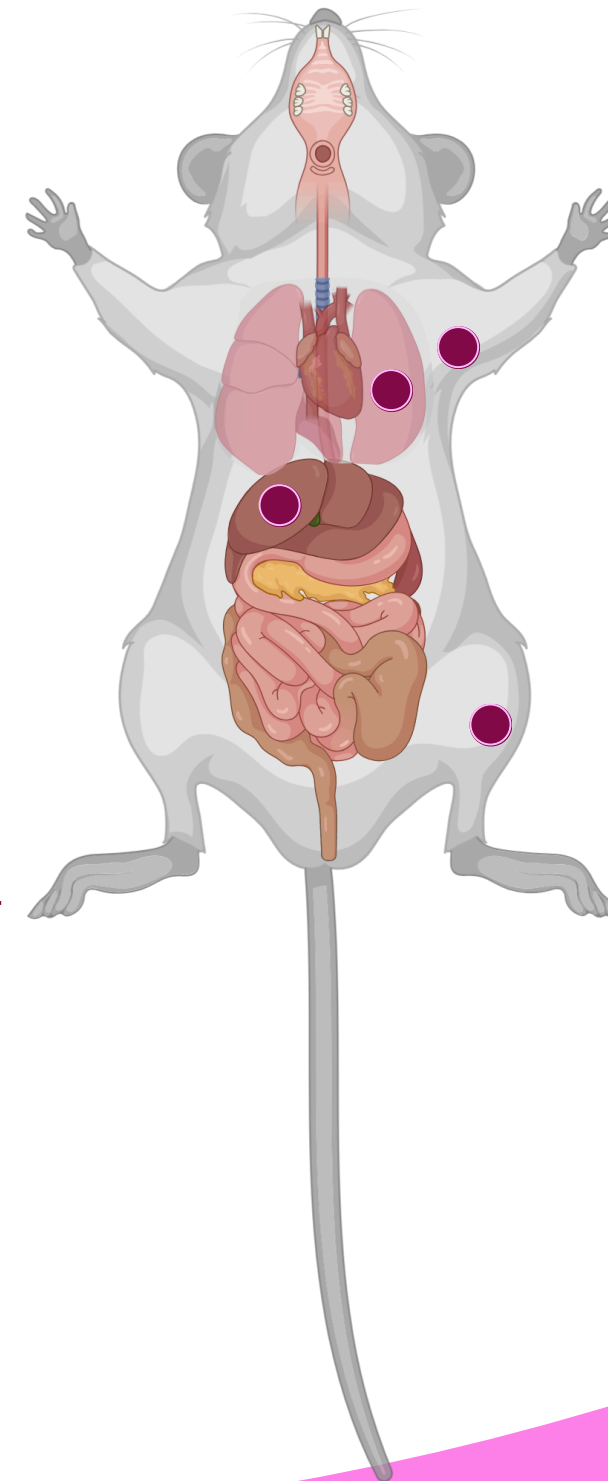
We made ER+ rats so we can better study breast cancer



Why is this new model useful?

ER+ breast cancer spreads to lungs, liver, lymph nodes, and bones in new rat model like in humans

We can use this rat model to find better treatments for ER+ breast cancer



How did we make this rat model?

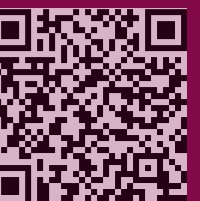
Give rats estrogen

Cancer grows

Remove cancer cells and grow for more studies



Carbone Cancer Center
UNIVERSITY OF WISCONSIN
SCHOOL OF MEDICINE AND PUBLIC HEALTH



Carstyn F. Joiner, Gui Ma, Sydney Schjoneman, Patrick Colegrove, James Shull, Wei Xu. AACR 2025 Annual Meeting.