

# New breast cancer treatments could block protein BRD8

## ER+/HER2+ breast cancer is very hard to treat

ER and HER2 are proteins that tell cancer cells to grow. They use connected paths inside cells to “talk” to each other. Even if a drug blocks one protein, the other protein keeps cancer growing.

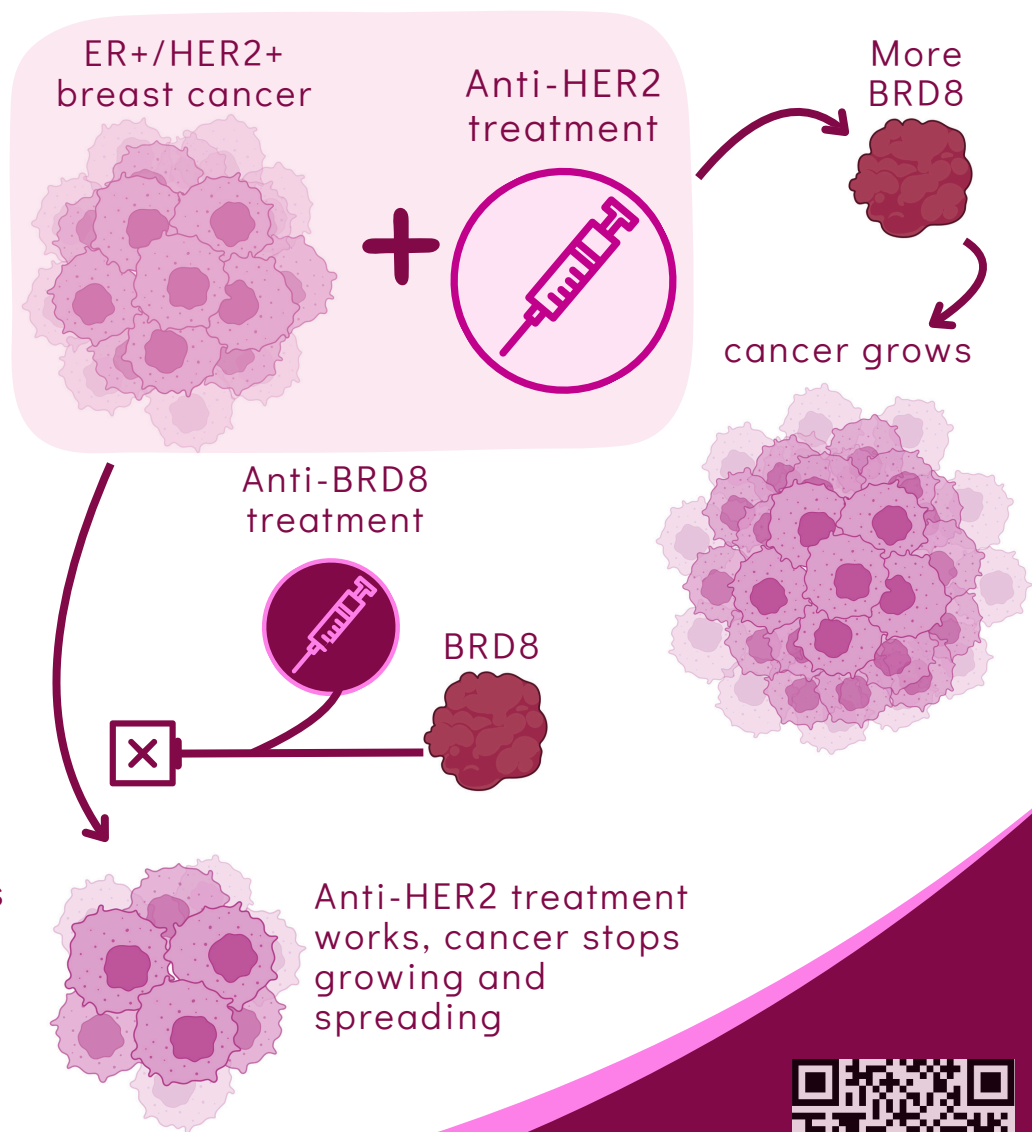
## Protein BRD8 makes cancer grow

Researchers found that protein BRD8 helps tell cancer cells to grow.

Anti-HER2 cancer treatments increase BRD8 in cancer cells, which tells cancer to grow again

## Blocking BRD8 helps cancer treatments work better

In this study, researchers found that blocking BRD8 made cancer treatments work better.



**Carbone Cancer Center**  
UNIVERSITY OF WISCONSIN  
SCHOOL OF MEDICINE AND PUBLIC HEALTH

Ang Gao, Parth Khatri, Gui Ma, Peng Liu,  
Mark Burkard, Kari Wisinski, Charles  
Perou, Huy Dinh, Wei Xu. AACR 2025.