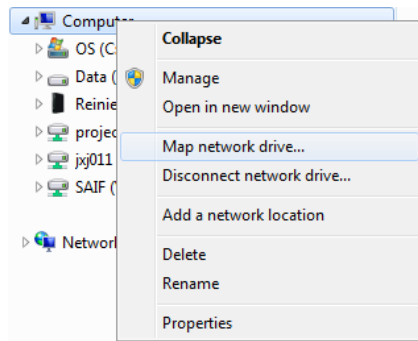


## How to access UW SAIF data from the Radiology Network (isilon)

Note: Data in designated folders on the Inveon, IVIS, Fluobeam, and IRW Analysis Workstation PCs are automatically backed up every morning at 2am.

1. Request permissions to your user folder from the SAIF manager
2. Log in to a Radiology PC using your 6-digit (3 letters, 3 numbers) login and password. If you do not have a radiology network username/password, the SAIF manager will issue a generic one to you.
3. Map Network Drive
  - a. Open a Windows Explorer window (ie. My Computer, My Documents)
  - b. Right click on Computer → Map network drive...



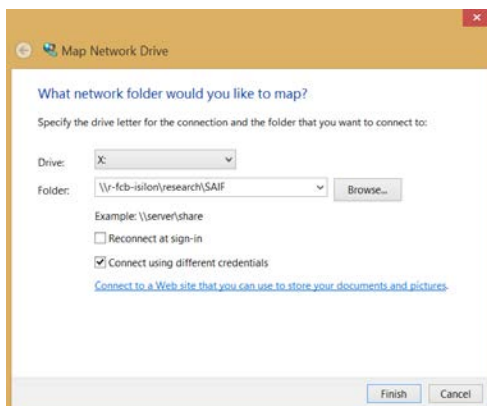
4. Select an unused Drive: from the drop down menu

NOTE: In step 5 below, the brackets and the text in the [brackets] should not be entered in the network path. Only enter the information requested within the brackets.

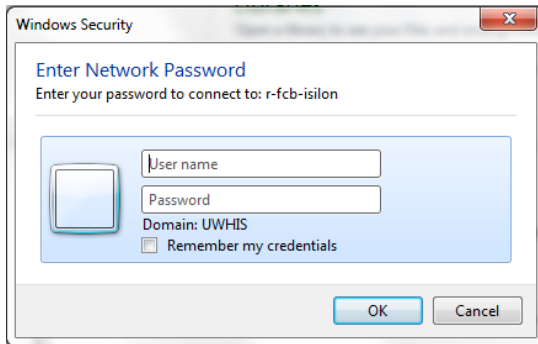
5. To access:
  - a. PET and/or CT data, insert: [\\r-fcb-isilon\research\SAIF\DPET00001\\_AW\Preclinical\Users\Admin\User Folders\[enter PI lastname firstname \(ie. Smith John\)\]Datasets](#) in the box next to Folder
  - b. IVIS data, insert: [\\r-fcb-isilon\research\SAIF\IVIS\[enter user's initials used to log in the Living Image software \(ie. ABC\)\]](#) in the box next to Folder.
  - c. Fluobeam data, insert: [\\r-fcb-isilon\research\SAIF\Fluobeam\Fluobeam\[enter user's lastname firstname \(ie. Smith John\)\]](#) in the box next to Folder.

(In the future, just click the drop down and select this network path so you do not have to manually enter it)

6. Check the box next to Connect using different credentials
7. Click Finish



8. Enter your Radiology login and password used in step 2.



9. Navigate to your data and copy/paste it to destination. **WARNING:** Be careful, this may be the only copy of your data. Be sure not to delete any files.
  - a. \*For PET data, use the .pet.img and the respective .pet.img.hdr filename to open in IRW, Amira, AsiPro, ImageJ
  - b. \*For CT data, use the .ct.img and the respective .ct.img.hdr filename to open in IRW, Amira, AsiPro, ImageJ  
\*NOTE: To analyze PET and CT data on an IRW PC provided by the SAIF, you must copy the .img and .img.hdr files and paste to a designated location on one of the IRW Analysis Workstations (See step 3 of "[How to open UW SAIF PET/CT data using IRW on Analysis Workstations \(IRW1, IRW2, & IRW3\)](#)".) If data is not pasted to the correct location on an IRW PC, it will not be automatically backed up and it will be deleted.  
If you are not using an IRW PC provided by the SAIF, copy and paste your data to another PC capable of handling large datasets. Opening datasets on a PC directly from the Radiology Network will take a very long time to process.
  - c. For IVIS data, use the SequenceInfo.txt file with Living Image software only. This file will not work with other imaging software.
  - d. For Fluobeam data, use the .tiff or .avi file. You can open these formats in most image or video software.

Troubleshooting – If you are unable to access your data, follow these steps:

1. Ensure the network path is entered exactly as shown in step 5.
2. In step 5, replace [\\r-fcb-isilon](#) with [\\10.112.188.3](#) (map network IP address)
3. Contact the SAIF